

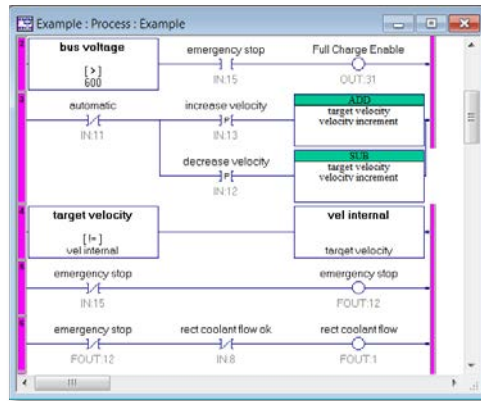


Overview

UEdit[®] (UNICO Embedded Drive Integration Tools) is a suite of tools for customizing, monitoring, and managing UNICO's embedded drive applications. The software, which runs on a Windows-based personal computer, lets users tailor an application to their needs without affecting the core program. This provides greater control over integration as well as the independence to make engineering changes at any time. Powerful diagnostic, simulation, and archiving tools help minimize downtime and shorten start-ups. UEdit[®] operates with UNICO's 1000, 2000, and 5300 series drives.

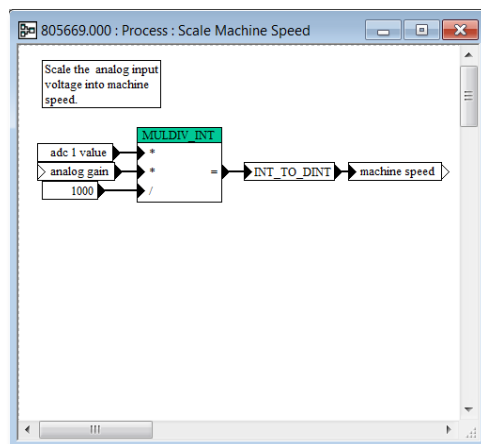
Ladder Editor

The *Ladder Editor* lets users build ladder logic to control or modify embedded drive functions. The graphical editor provides both on-line monitoring and off-line simulation modes. Standard programmable controller features, such as contacts, coils, timers, and data read and write functions, are supported.



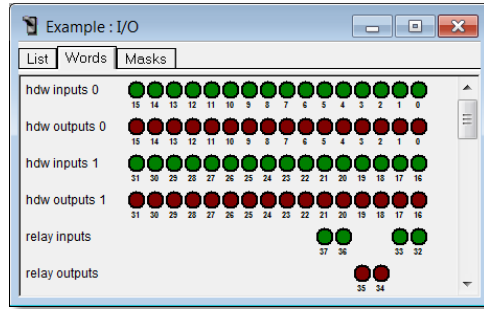
Function Block Editor

The *Function Block Editor* extends programming flexibility by allowing mathematical computations, Boolean logic, counters, comparisons, timers, and other functions to be included in applications. More than 70 predefined function blocks are provided and users can create new ones. The editor features an intuitive drag-and-drop environment.



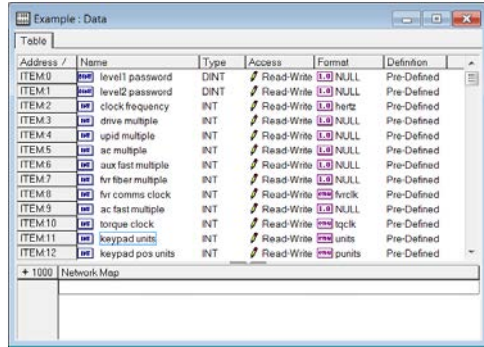
UEdit®

Overview
(continued)



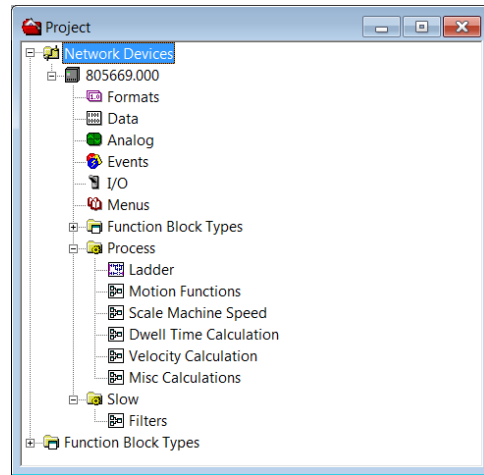
I/O View

The *I/O View* displays the status of application inputs and outputs and lets users manipulate them. Bits can be viewed by name or graphically by word. Individual bits may be set, cleared, or forced either on or off.



Data View

The *Data View* displays all setup and readout parameters in a device along with their values and other attributes. Parameter units may be changed globally within a device with the click of a button. Variables may also be dragged to the function-block or ladder-editor windows when programming. A complete record of drive data can be permanently archived or printed for safekeeping and restored to the drive in the event of a failure.



Project View

Project View reveals the architecture of a UEdit™ project at a glance. User-defined tasks, such as ladders and function blocks, are grouped according to the clock levels assigned to them. This allows code to be partitioned into meaningful segments that can be displayed simultaneously during monitoring or simulation.

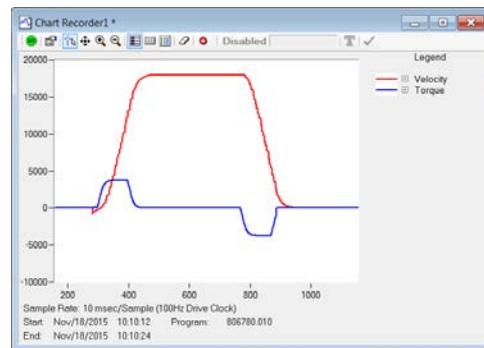
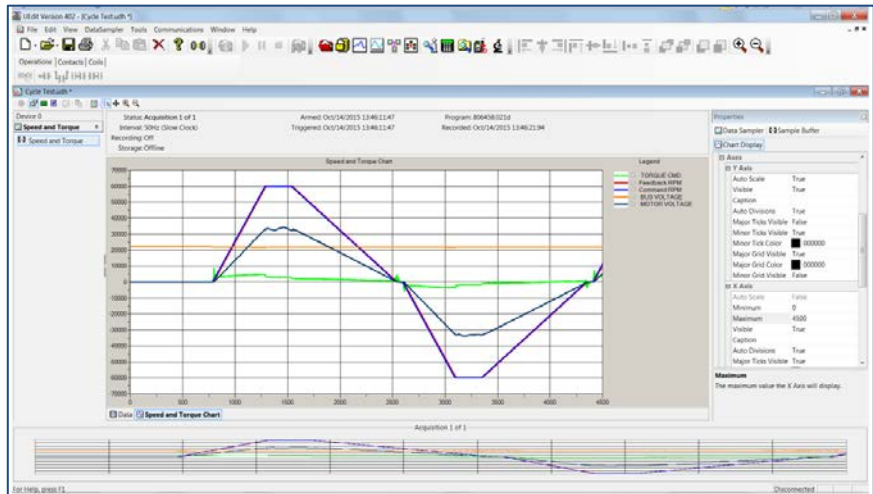


Chart Recorder

The *Chart Recorder* monitors drive performance in real time. Four channels can be displayed simultaneously in several user-definable formats. Predefined signals, data, and I/O from varying clock levels may be monitored. Chart data can also be exported to a file for use by other programs such as Excel.

Overview (continued)



Data Sampler

The *Data Sampler* is used to sample signals in the device in real time. The data can then be stored to a file on a mass storage device or recorded to a PC while viewing. Multiple sampler buffers can be configured to run on a single data sampler that can be setup to trigger from various conditions.

Each sampler can be configured to sample on a clock interval or use a trigger condition to sample when the condition is TRUE. Each sampler can evaluate trigger conditions on its own clock interval independent of other sampler buffers.

Specifications Additional Features

- Helpful application download wizard makes upgrading core embedded applications easy
- Automatically detects new devices and program changes within devices
- Multi-drop capabilities for maintaining simple local networks
- Identifies network devices and reports their attributes
- Built-in help menu
- Revisions are upwardly compatible and load without necessitating downtime

Minimum Requirements

- UNICO drive supporting UEdit[®] tools
- Windows operating system
- USB or serial communications port

Part Numbers

Number	Description
804-758 (or)	UEdit [®] Programming Tool Suite
805-302	UEdit Lite [™] Programming Tool Suite
714-070	Unico High Speed Isolated USB to RS422 Serial Adapter Kit.

UEdit[®]

Unico[®] Embedded Drive Integration Tools

UNICO-Worldwide



Corporate Headquarters

Unico, LLC.
3725 Nicholson Rd.
P. O. Box 0505
Franksville, WI
53126-0505

262.886.5678
262.504.7396 *fax*
www.unicous.com



All trade designations are provided without reference to the rights of their respective owners.

Specifications subject to change without notice.

Unico is a leading global innovator of motion-control solutions for industry. Founded in 1967, the company develops, manufactures, and services variable-speed drives, application-engineered drive products, integrated drive systems, and ancillary products that improve operations by increasing productivity, safety, and equipment life while lowering energy and maintenance costs.